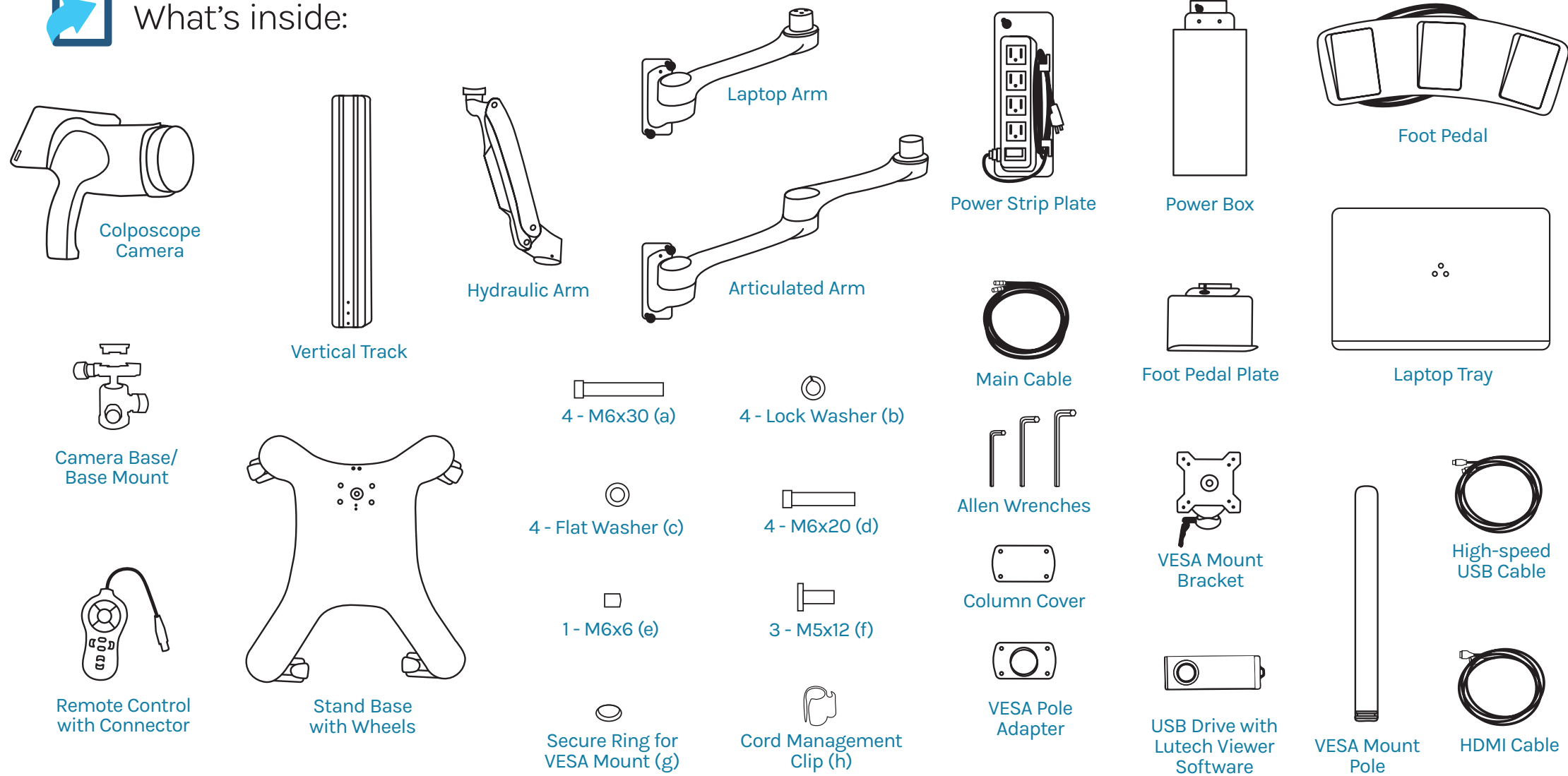


 What's inside:



Call **631-676-7432 ext. 1** for your **FREE** virtual training session.

Schedule a live one-on-one support session to quickly setup your colposcope camera and connect to Lutech's free viewer software.
It's Quick. It's Easy. It's Free.

 See Back for Quick Assembly Instructions



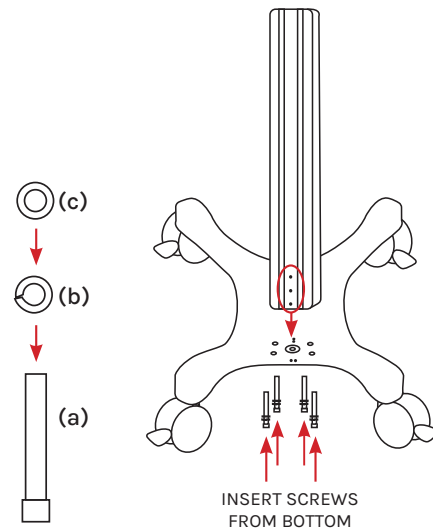
QUICK ASSEMBLY INSTRUCTIONS

LT-300HD WITH SWING-ARM STAND

Before you begin assembly, open and inspect the pieces.

- To attach the vertical track to the pre-drilled wheel base position the small 3 holes of the vertical track at the bottom. Align the track to the back of the wheel base making sure the 3 holes are facing down. Insert screws (a), lock washers (b) and flat washers (c) from the bottom of the wheel base to attach the vertical track. Securely tighten with Allen key (M6).

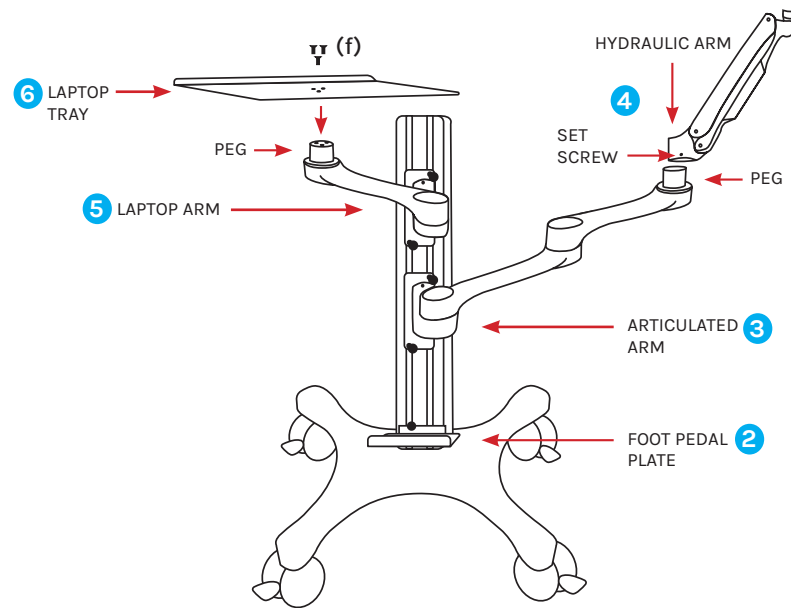
TIP: Insert and loosely install all 4 screws with washers from beneath the wheel base. Then, fully tighten all screws to secure track to base.



- With the wheel base facing forward, slide foot pedal plate (knob on top) on the front of the vertical track. Tighten knob to secure it in place 1/2 inch above the base.

- With the wheel base still facing forward, insert the articulated arm (peg facing up) into the track and slide it halfway down. Tighten both knobs to secure it in place.
- Slide the hydraulic arm on to the peg of the articulated arm. Tighten using the set screw at the base of the hydraulic arm. This set screw also adjusts the horizontal tension.
- Insert the laptop arm (peg facing up) into the track above the articulated arm. Leave about 3 inches above and below the arm and tighten both knobs to secure it in place.
- Attach laptop tray using 3 screws (labeled f) fully tighten with M6 Allen key.

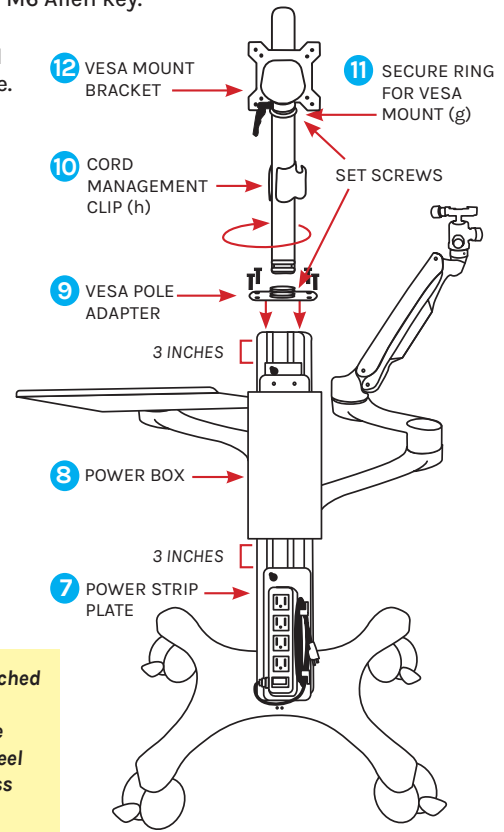
TIP: Insert and loosely install all 3 screws before fully tightening the tray.



- Insert the Power Strip Plate into the back side of the vertical track. Tighten knob to secure it in place as close as possible to the wheel base.
- Insert the Power Box into the track above the Power Strip Plate. Leave about 3 inches of space above and below the Power Box for clearance of the Main Cable and USB cable connections. Securely tighten both knobs to keep it in place.
- Attach the column cover with the VESA Pole adapter, and tighten the 4 screws (labeled d) using the M6 Allen key.

- Attach the cord management clip marked (h) by sliding it on to the VESA mount pole.
- Attach the Secure Ring for VESA mount marked (g) by sliding it over the VESA mount pole. Using the provided Allen key and set screws in the bag labeled "Secure Ring for VESA mount". Set this ring at the desired monitor height by rotating the Allen key clockwise until it is snug.
- Slide and secure the VESA mount bracket atop the secure ring and lock it in place by using the lever attached to the back of the VESA mount bracket.
- Attach the VESA mount pole to the VESA Pole adapter. Rotate pole to set in place and use the set screw and Allen key to secure it in position.

WARNING: Adjustments while a monitor is attached may result in the stand being more susceptible to tip-over. Mounted monitor should always face towards the front, over the longer legs of the wheel base. We recommend using a monitor that is less than 27 inches and lighter than 22 pounds.

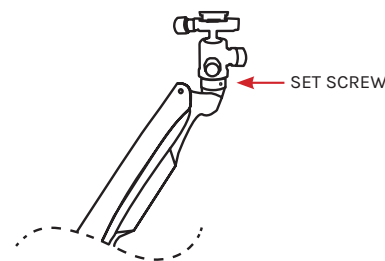


ATTACHING THE LT-300HD COLPOSCOPE CAMERA

- Screw the camera base onto the hydraulic arm and tighten using the set screw.

TIP: Make sure to tighten all the knobs on the base before attempting to attach it.

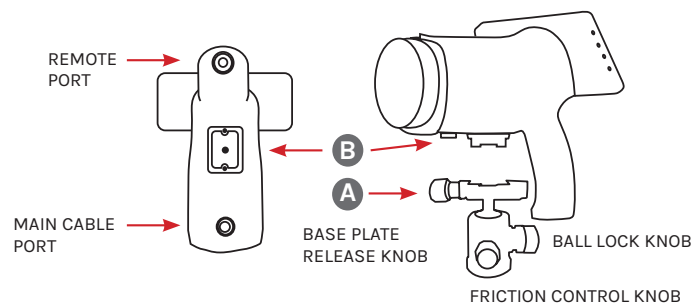
IMPORTANT ADJUSTMENTS: See full manual to set the hydraulic arm's weight resistance after the camera is attached. To adjust the tension of the hydraulic arm use the set screws, horizontal (H2.5/2.5mm Allen key) and vertical (H5/5mm Allen key).



- Fully open the camera base mount using the base plate release knob (A). Slide the camera base plate (B) onto the camera mount and tighten the base plate release knob clockwise to secure the colposcope.

Note: The camera base plate should already be attached to the bottom of the colposcope.

IMPORTANT: DO NOT let go of the colposcope camera until the base plate release knob is securely tightened, and the ball lock knob and the friction control knob are tightened.



- Remove the cable routing covers by pulling on the ends closest to the vertical track to release them from beneath the Hydraulic Arm and Articulated Arm. Thread the Main Cable through the underside of the arms (shown in orange (C)), ensuring you leave enough slack at each joint to avoid excessive tension. Reinstall the routing covers once the main cable is properly routed.

Note: There is a cable routing cover for threading the USB cable connected to the laptop or Power Box underneath the laptop arm.

- Plug the main cable into the connector located on the bottom of the colposcope. This port is located toward the front of the camera. Carefully align notches with red dots to connect.

- Plug the main cable into the connector located on the bottom port of the power box. Carefully align notches with red dots to connect.

- Plug the remote connector into the port located on the bottom of the colposcope camera handle.

